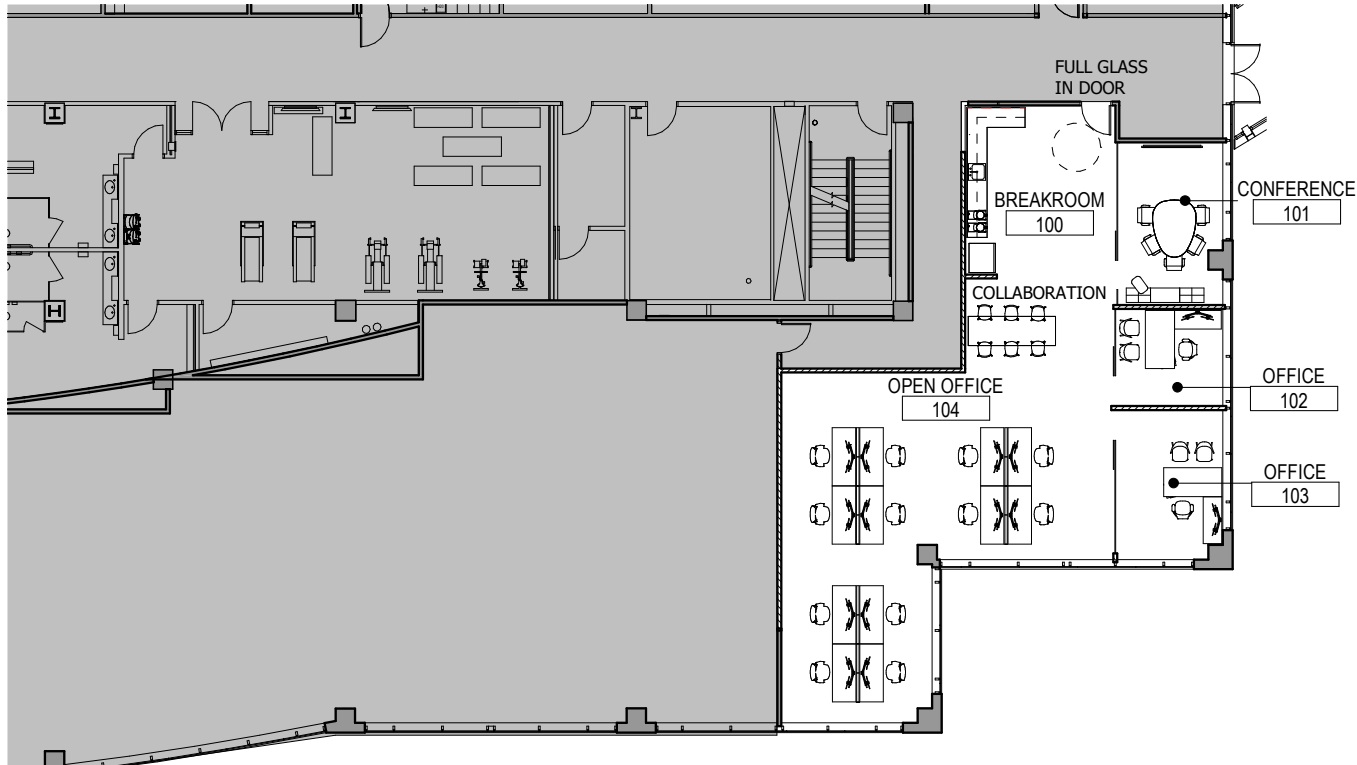


SUITE 150B  
2,637 RSF

# CRESCENT RIDGE Corporate Center II



Leasing by:



Steve Shepherd, SIOR  
612.430.9973  
steve.shepherd@ngkf.com

Matt Elder, CCIM  
612.430.9974  
matt.elder@ngkf.com

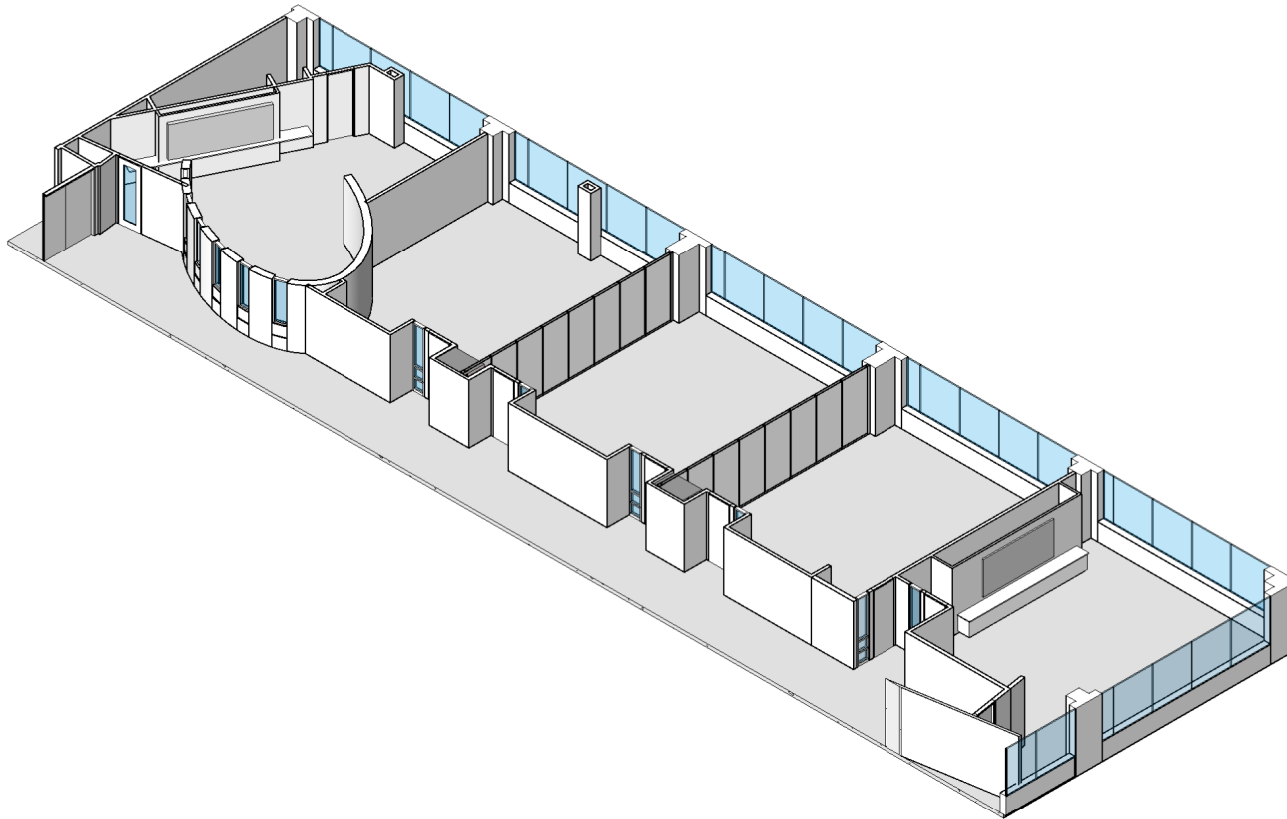
Owned and  
managed by:



100 South 5th Street #2150, Minneapolis, MN 55402

SUITE 200  
7,065 RSF

# CRESCENT RIDGE Corporate Center II



Leasing by:



Steve Shepherd, SIOR  
612.430.9973  
steve.shepherd@ngkf.com

Matt Elder, CCIM  
612.430.9974  
matt.elder@ngkf.com

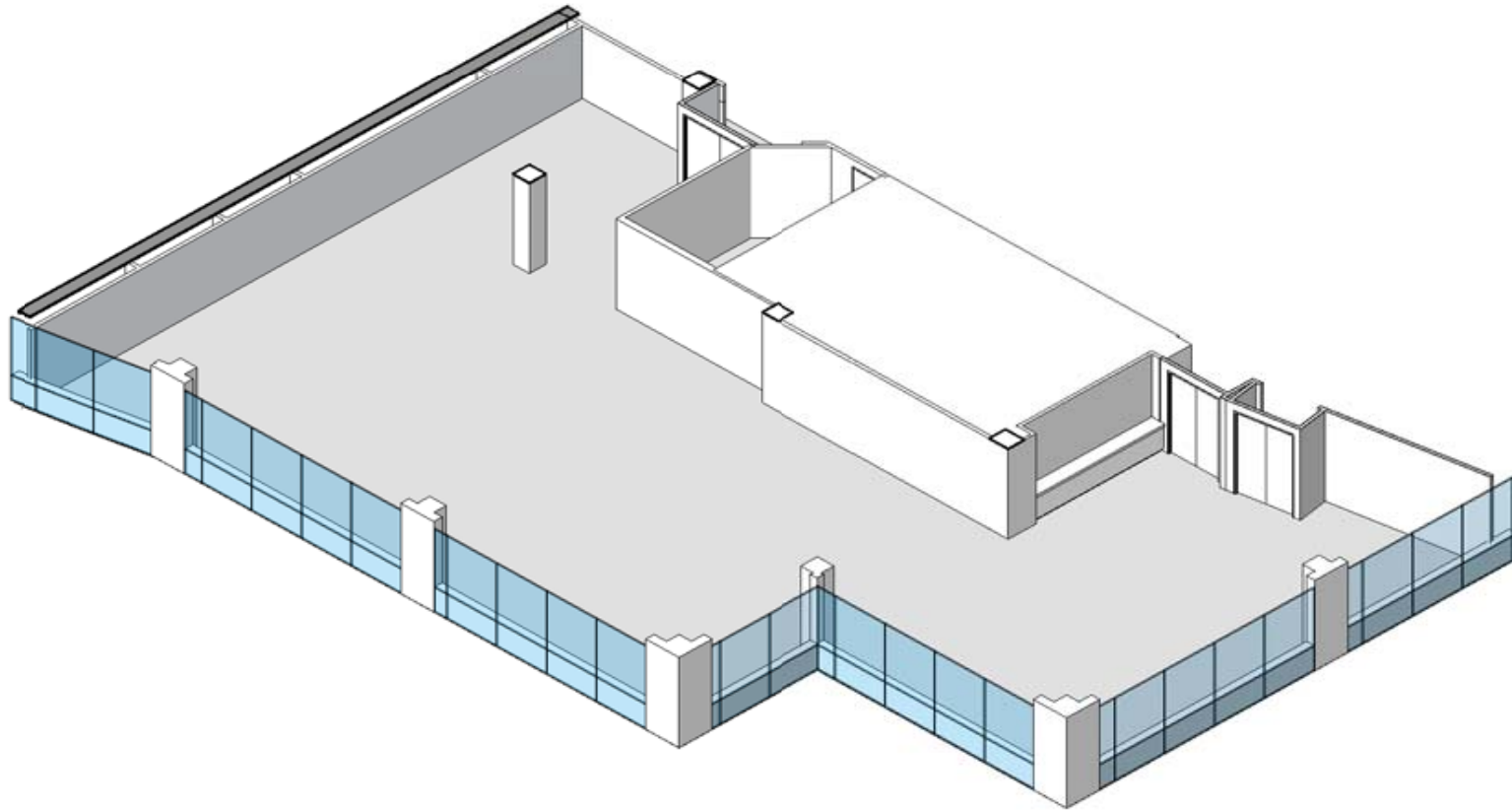
100 South 5th Street #2150, Minneapolis, MN 55402

Owned and  
managed by:



SUITE 285  
6,576 RSF

# CRESCENT RIDGE Corporate Center II



Leasing by:



Steve Shepherd, SIOR  
612.430.9973  
steve.shepherd@ngkf.com

Matt Elder, CCIM  
612.430.9974  
matt.elder@ngkf.com

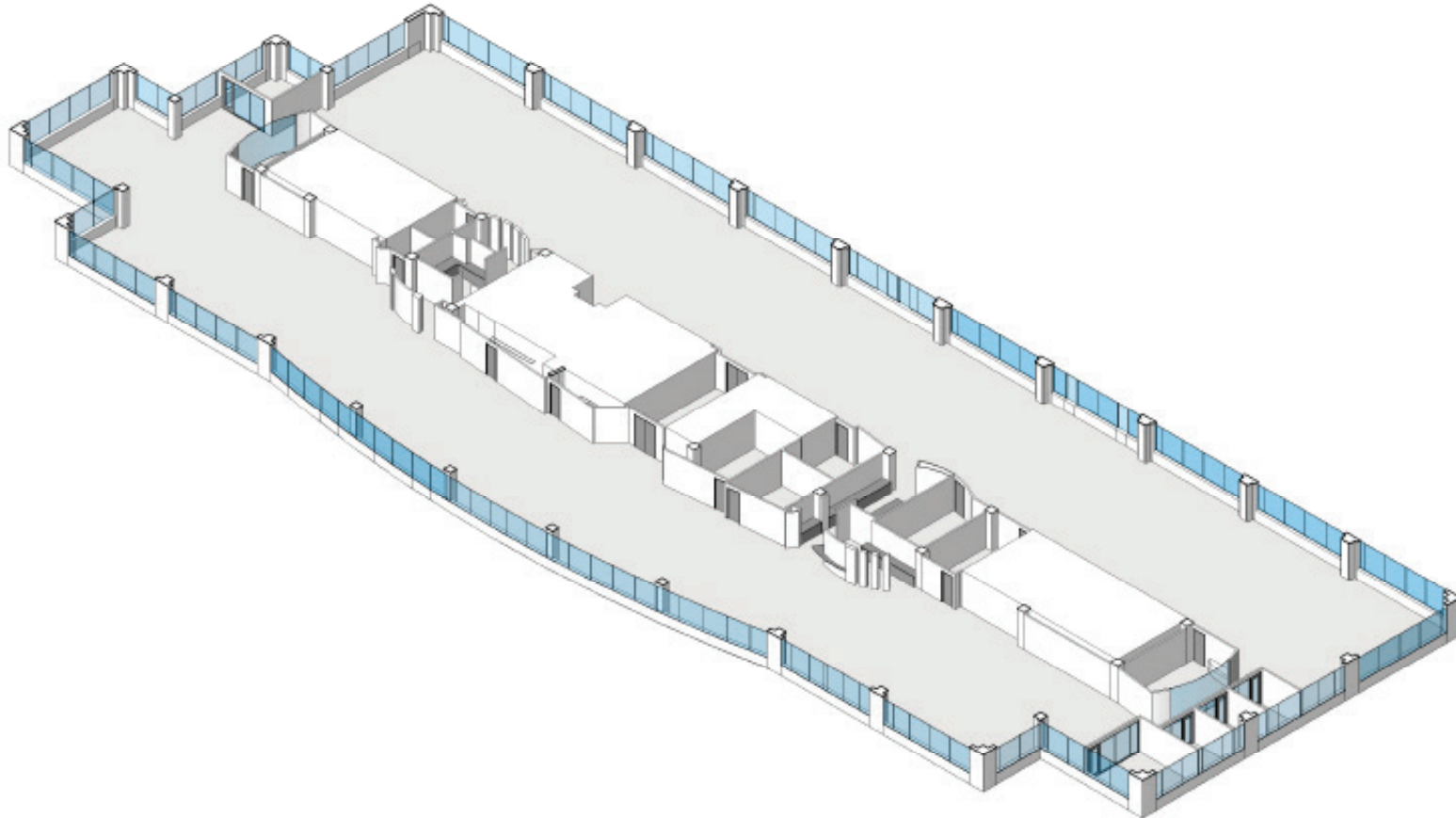
Owned and  
managed by:



100 South 5th Street #2150, Minneapolis, MN 55402

SUITE 300  
34,654 RSF

# CRESCENT RIDGE Corporate Center II



Leasing by:



Steve Shepherd, SIOR  
612.430.9973  
steve.shepherd@ngkf.com

Matt Elder, CCIM  
612.430.9974  
matt.elder@ngkf.com

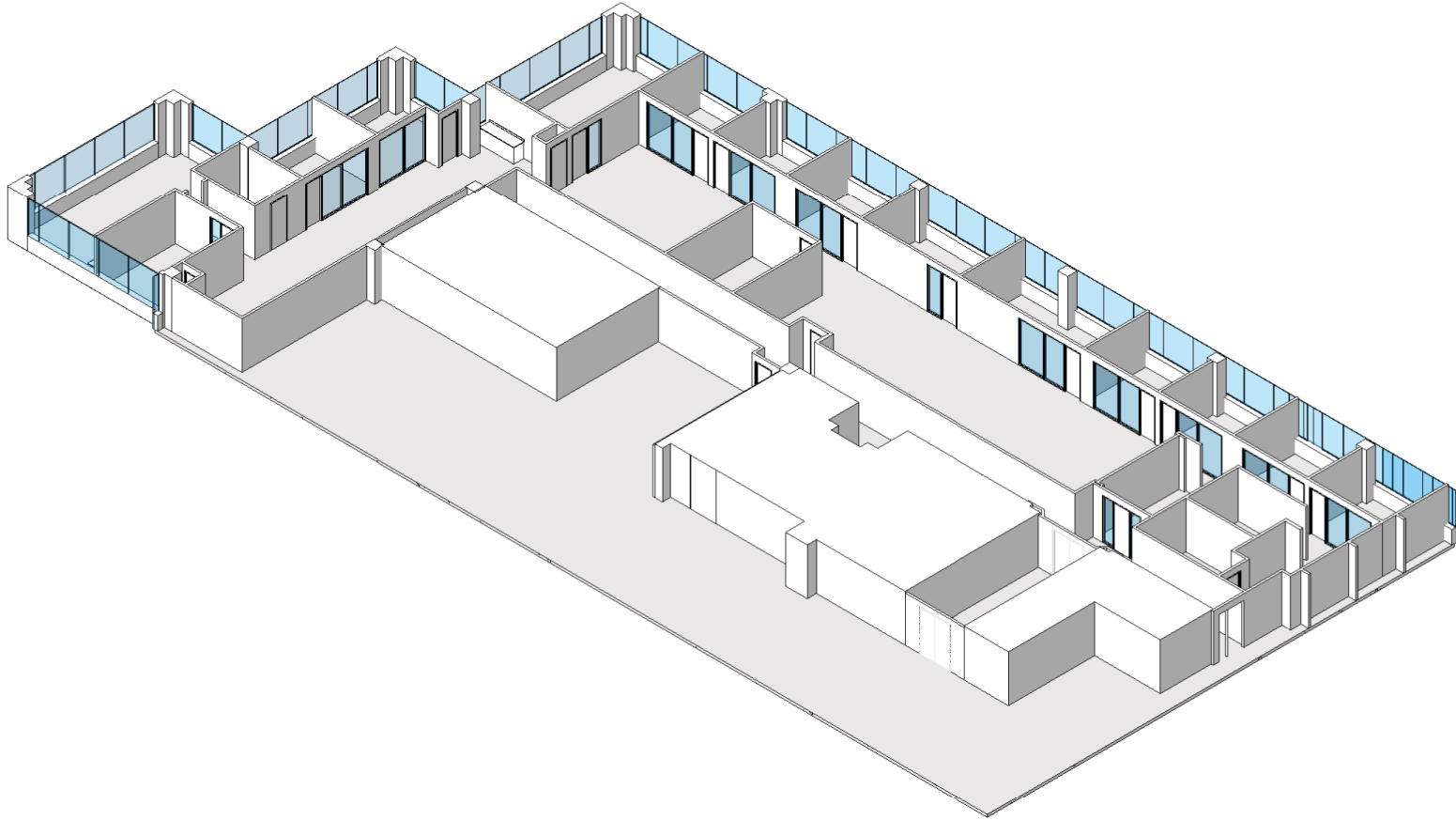
100 South 5th Street #2150, Minneapolis, MN 55402

Owned and  
managed by:



SUITE 620  
10,211 RSF

# CRESCENT RIDGE Corporate Center II



Leasing by:



Steve Shepherd, SIOR  
612.430.9973  
steve.shepherd@ngkf.com

Matt Elder, CCIM  
612.430.9974  
matt.elder@ngkf.com

100 South 5th Street #2150, Minneapolis, MN 55402

Owned and  
managed by:

